

Rotule SI

SIL20-T-K-DURBAL - SIL20-T-K-DURBAL

<https://www.123roulement.com/roulement-palier/rotule/si/sil20-t-k-durbal>

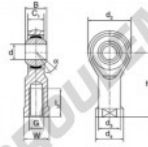
SIL20-T-K



female thread:
maintenance free,
according to
DIN ISO 12240-4,
series K



Description: DIN ISO rod end K series. Made of spherical plain bearing DG...PW pressed into rod end body. Sliding combination steel / bronze-PTFE composite.



Rod end body:
surface zinc plated

Sliding combination:
steel / bronze-PTFE composite

Inner ring:
bearing steel, hardened, ground and
spherical surface chromium plated

Outer ring:
brass body pressed around, outer race
lined with bronze-PTFE composite

Lubrication:
maintenance free

order number		measurement [mm]						
right hand thread	left hand thread	d	G	B	C ₁	d ₂	d ₃	d ₄
	SIL 20 T/K	20	M 20 x 1,5	25	18,00	50	27,5	34

type	measurement [mm]			load rating C ₁₀ [N]	weight [kg]	
	l ₁ min	W	h			
SI / SIL 20 T/K	33	30	77	14	57,0	0,420

CARACTÉRISTIQUES PRODUIT

Marque	DURBAL
N° Ean13	3663952489568
Diam. intérieur	20 mm
Diam. extérieur	50 mm
Epaisseur	25 mm
Type	SI
Poids	420 g
Filetage	Filetage à gauche
Lubrification	sans
Conditionnement	1

contact@123roulement.com

03 59 36 04 90

CRT4 de Lesquin 60 Rue Du Haut De Sainghin 59273 Fretin FRANCE