

Rotule SA SA25-BK-DURBAL - SA25-BK-DURBAL

<https://www.123roulement.com/roulement-palier/rotule/sa/sa25-bk-durbal>

SA25-BK



male thread;
maintenance free,
according to
DIN ISO 12240-4,
series K

Description: DIN ISO rod end K series. Sliding combination steel / bronze-PTFE composite.

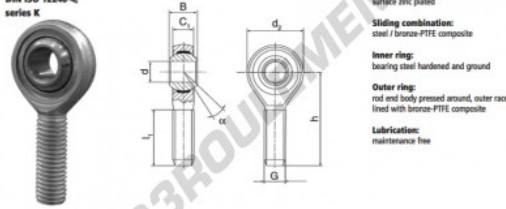
Rod end body:
surface zinc plated

Sliding combination:
steel / bronze-PTFE composite

Inner ring:
bearing steel hardened and ground

Outer ring:
rod end body pressed around, outer race
lined with bronze-PTFE composite

Lubrication:
maintenance free



order number	measurement [mm]		measurement [mm]		
	d	G	B	C ₁	d ₂
SA 25 BK	25	M 24 x 2	31	22,0	61

type	measurement [mm]		α [°]	load rating C ₀ [kN]	weight [kg]
	l ₁ min	h			
SA / SA 25 BK	57	94	15	85,00	0,640

CARACTÉRISTIQUES PRODUIT

Marque	DURBAL
N° Ean13	3663952492735
Diam. intérieur	25 mm
Diam. intérieur	0.984" inch
Diam. extérieur	61 mm
Diam. extérieur	2.402" inch
Epaisseur	31 mm
Epaisseur	1.22" inch
Type	SA
Poids	640 g
Filetage	Filetage à droite
Lubrification	sans
Conditionnement	1

contact@123roulement.com

03 59 36 04 90

CRT4 de Lesquin 60 Rue Du Haut De Sainghin 59273 Fretin FRANCE