

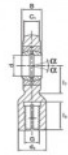
## Rotule TAPR GIHO-K-12DO-DURBAL - GIHO-K-12DO-DURBAL

<https://www.123roulement.com/roulement-palier/rotule/tapr/giho-k-12do-durbal>

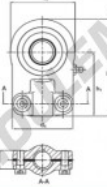
### GIHO-K-12DO



female thread:  
hydraulic rod ends,  
according to  
DIN 24555



Description: Hydraulic rod end with slot and clamping arrangement. Made of spherical plain bearing DGE. E5 pressed into rod end housing. Sliding combination steel/steel with grease nipple.



Sliding combination:  
steel / steel

Inner ring:  
bearing steel, hardened, ground and phosphated

Outer ring:  
bearing steel, hardened, ground and phosphated

Lubrication:  
lubrication required

| order number            | measurement [mm]  |                  | measurement [mm] |                |                |             |                                 |                |    |                |                |
|-------------------------|-------------------|------------------|------------------|----------------|----------------|-------------|---------------------------------|----------------|----|----------------|----------------|
|                         | right hand thread | left hand thread | d                | d <sub>1</sub> | d <sub>2</sub> | G           | d <sub>3</sub>                  | d <sub>4</sub> | B  | C <sub>1</sub> | C <sub>2</sub> |
| GIHO-K 12 DO*           |                   |                  | 12               | 15,0           | 35             | M 10 x 1,25 | 17                              | 40             | 10 | 8              | 13             |
| type                    | measurement [mm]  |                  | h <sub>1</sub>   | l <sub>1</sub> | l <sub>2</sub> | α [°]       | load rating C <sub>0</sub> [kN] | weight [kg]    |    |                |                |
| GIHO-K / GIHO-KL 12 DO* | 42                | 15               | 59,5             | 16             | 11             | 17,0        | 0,12                            |                |    |                |                |

## CARACTÉRISTIQUES PRODUIT

|                 |                   |
|-----------------|-------------------|
| Marque          | DURBAL            |
| N° Ean13        | 3663952500607     |
| Diam. intérieur | 12 mm             |
| Diam. extérieur | 35 mm             |
| Épaisseur       | 8 mm              |
| Type            | TAPR              |
| Poids           | 120 g             |
| Filetage        | Filetage à droite |
| Lubrification   | avec              |
| Conditionnement | 1                 |

[contact@123roulement.com](mailto:contact@123roulement.com)

03 59 36 04 90

CRT4 de Lesquin 60 Rue Du Haut De Sainghin 59273 Fretin FRANCE