

Rotule SA BEM14-20-502-DURBAL - BEM14-20-502-DURBAL

<https://www.123roulement.com/roulement-palier/rotule/sa/bem14-20-502-durbal>

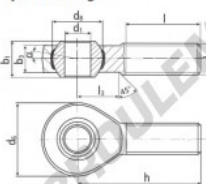
BEM14-20-502



male thread:
maintenance free,
adapter sizes
according to
DIN ISO 12240-4,
series K



**DURBAL® heavy-duty rod ends
with integral spherical
plain bearing**



rod end housing:
forged steel, tempered, rolled thread,
surface galvanized, free of Cr VI

joint ball:
ball bearing steel, hardened and ground,
surface superfinished and chromium
plated

race:
nylon / teflon / glass fibre compound

tolerances:
see page 10

order number		measurements [mm]		weight		basic load rating	
type	type	d ₁	d ₂	d ₃	d ₄	b ₁	b ₂
BEM 14 -20	-502	14	M 14	36	25,35	19	13,5
measurements [mm]		weight		basic load rating		stat.	
type	h	l	l ₃	α ₁ °	α ₂ °	C	C ₀
BEM 14	60	36	20	16,0	9,5	0,127	15440 41300

CARACTÉRISTIQUES PRODUIT

Marque	DURBAL
N° Ean13	3663952507842
Diam. intérieur	14 mm
Diam. extérieur	36 mm
Épaisseur	19 mm
Type	SA
Poids	127 g
Filetage	Filetage à gauche
Lubrification	sans
Conditionnement	1

contact@123roulement.com

03 59 36 04 90

CRT4 de Lesquin 60 Rue Du Haut De Sainghin 59273 Fretin FRANCE