

Rotule SA BEM14-60-502-DURBAL - BEM14-60-502-DURBAL

<https://www.123roulement.com/roulement-palier/rotule/sa/bem14-60-502-durbal>

BEM14-60-502



male thread;
maintenance free,
adapter sizes
according to
DIN ISO 12240-4,
series K

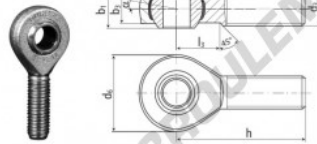
**DURBAL® heavy-duty rod ends
with integral spherical
plain bearing in stainless steel**

rod end housing:
stainless steel 1.4301, rolled thread,
surface with pickling treatment

joint ball:
stainless steel, hardened and ground,
surface superfinished

race:
nylon / teflon / glass fibre compound

tolerances:
see page 10



order number		right-hand thread		left-hand thread		measurements [mm]					
type		d ₁	d ₂	d ₃	d ₄	h	l	l ₁	l ₂		
BEM 14 -60	-502	14	M 14		36	25,35	19		13,5		
type		measurements [mm]			weight	basic load rating		dyn.		stat.	
type		h	l	l ₂	α ₁ ¹ [°]	α ₂ ¹ [°]	[kg]	C	[N]	C ₀	[N]
BEM 14		60	36	20	16,0	9,5	0,127	9480		27600	

CARACTÉRISTIQUES PRODUIT

Marque	DURBAL
N° Ean13	3663952509778
Diam. intérieur	14 mm
Diam. extérieur	36 mm
Epaisseur	19 mm
Type	SA
Poids	127 g
Filetage	Filetage à gauche
Lubrification	sans
Conditionnement	1

contact@123roulement.com

03 59 36 04 90

CRT4 de Lesquin 60 Rue Du Haut De Sainghin 59273 Fretin FRANCE