

Rotule SA

BEM18-60-501-DURBAL - BEM18-60-501-DURBAL

<https://www.123roulement.com/roulement-palier/rotule/sa/bem18-60-501-durbal>

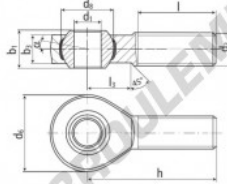
BEM18-60-501



male thread;
maintenance free,
adapter sizes
according to
DIN ISO 12240-4,
series K



**DURBAL® heavy-duty rod ends
with integral spherical
plain bearing in stainless steel**



rod end housing:
stainless steel 1.4301, rolled thread,
surface with pickling treatment

joint ball:
stainless steel, hardened and ground,
surface superfinished

race:
nylon / teflon / glass fibre compound

tolerances:
see page 10

order number		measurements [mm]		weight		basic load rating	
type	right-hand thread, left-hand thread	d ₁	d ₂	d ₃	d ₄	b ₁	b ₂
BEM 18 -60	-501	18	M 18 x 1,5	46	31,70	23	16,5
measurements [mm]		weight		basic load rating		stat.	
type	h	l	l ₃	α ₁ ¹⁾	α ₂ ²⁾	C	C ₀
BEM 18	72	44	25	15,0	9,5	16160	46500

CARACTÉRISTIQUES PRODUIT

Marque	DURBAL
N° Ean13	3663952509822
Diam. intérieur	18 mm
Diam. intérieur	0.709" inch
Diam. extérieur	46 mm
Diam. extérieur	1.811" inch
Epaisseur	23 mm
Epaisseur	0.906" inch
Type	SA
Poids	250 g
Filetage	Filetage à droite
Lubrification	sans
Conditionnement	1

contact@123roulement.com

03 59 36 04 90

CRT4 de Lesquin 60 Rue Du Haut De Sainghin 59273 Fretin FRANCE