

# Rotule SA

## BEM25-60-501-DURBAL - BEM25-60-501-DURBAL

<https://www.123roulement.com/roulement-palier/rotule/sa/bem25-60-501-durbal>

### BEM25-60-501



male thread;  
maintenance free,  
adapter sizes  
according to  
DIN ISO 12240-4,  
series K

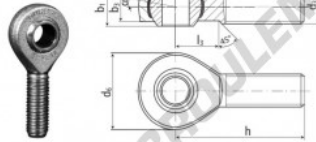
**DURBAL® heavy-duty rod ends  
with integral spherical  
plain bearing in stainless steel**

rod end housing:  
stainless steel 1.4301, rolled thread,  
surface with pickling treatment

joint ball:  
stainless steel, hardened and ground,  
surface superfinished

race:  
nylon / teflon / glass fibre compound

tolerances:  
see page 10



order number		measurements [mm]		weight		basic load rating	
type	right-hand thread	d <sub>1</sub>	d <sub>2</sub>	d <sub>4</sub>	h <sub>1</sub>	C	C <sub>2</sub>
BEM 25 -60	-501	25	M 24 x 2	60	42,80	31	22,0
measurements [mm]		weight		basic load rating		stat.	
type	h	l	l <sub>3</sub>	α <sub>1</sub> [°]	α <sub>2</sub> [°]	[N]	[N]
BEM 25	94	57	30	15,0	10,0	0,630	27860 79100

## CARACTÉRISTIQUES PRODUIT

Marque	DURBAL
N° Ean13	3663952509877
Diam. intérieur	25 mm
Diam. extérieur	60 mm
Epaisseur	31 mm
Type	SA
Poids	630 g
Filetage	Filetage à droite
Lubrification	sans
Conditionnement	1

[contact@123roulement.com](mailto:contact@123roulement.com)

03 59 36 04 90

CRT4 de Lesquin 60 Rue Du Haut De Sainghin 59273 Fretin FRANCE