

## Rotule SA BEM30-60-501-DURBAL - BEM30-60-501-DURBAL

<https://www.123roulement.com/roulement-palier/rotule/sa/bem30-60-501-durbal>

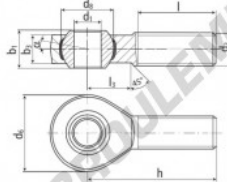
### BEM30-60-501



male thread;  
maintenance free,  
adapter sizes  
according to  
DIN ISO 12240-4,  
series K



**DURBAL® heavy-duty rod ends  
with integral spherical  
plain bearing in stainless steel**



rod end housing:  
stainless steel 1.4301, rolled thread,  
surface with pickling treatment

joint ball:  
stainless steel, hardened and ground,  
surface superfinished

race:  
nylon / teflon / glass fibre compound

tolerances:  
see page 10

order number		measurements [mm]		measurements [mm]		weight		basic load rating	
type	right-hand thread, left-hand thread	d <sub>1</sub>	d <sub>2</sub>	d <sub>3</sub>	d <sub>4</sub>	l <sub>1</sub>	l <sub>2</sub>	dyn	stat.
BEM 30 -60	-501	30	M 30 x 2	70	50,75	37	25,0		
measurements [mm]		weight		basic load rating					
type	h	l	l <sub>3</sub>	α <sub>1</sub> <sup>1)</sup> [°]	α <sub>2</sub> <sup>2)</sup> [°]	[kg]		C <sub>10</sub> [N]	C <sub>5</sub> [N]
BEM 30	110	66	35	17,0	10,5	1,015		33800	97100

## CARACTÉRISTIQUES PRODUIT

Marque	DURBAL
N° Ean13	3663952509907
Diam. intérieur	30 mm
Diam. extérieur	70 mm
Épaisseur	37 mm
Type	SA
Poids	1015 g
Filetage	Filetage à droite
Lubrification	sans
Conditionnement	1

[contact@123roulement.com](mailto:contact@123roulement.com)

03 59 36 04 90

CRT4 de Lesquin 60 Rue Du Haut De Sainghin 59273 Fretin FRANCE